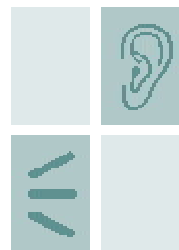


Reaching Communities

BATIAS
Independent Advocacy Service

Registered Charity: 1016226
Company No: 2776330



November 2008

Issue 4

New members of staff

I would like to welcome our new members of staff at the "Can-Do" groups. Sophia, Claire, Charmaine and Jo-Ann all started working for BATIAS during the summer.

Sophia and Claire help at the Southend group and have already been involved with arts and crafts, visits to Leigh-on-Sea and a trip to the theatre. Sophia has also had training on how to use the computer.

Charmaine and Jo-Ann both help at the Basildon group on a Tuesday afternoon. Jo-Ann has also been helping with the parenting group.

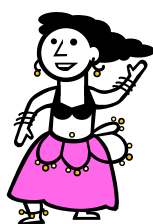
Hello from Charmaine

On the 14th October I held a coffee afternoon at my home in Basildon. We raised £20 for the Macmillan Cancer Charity. I like the opportunity to work even though I have a disability. I enjoy listening to and helping people. Mary supports me at the group and Angie has helped me by making a communication board so people can understand what I am saying.



Hello from Jo-Ann

I like the Tuesday morning group and the volunteers who help there. I like showing people how to draw. I like being paid for work!



We recently enjoyed belly dancing, singing on the Karaoke machine and we are planning a Mascot for the group.

I like working with Charmaine because she makes me laugh and I think she is very capable. It was nice of her to show me around her home.

New Parenting group

In November we are hoping to run a parenting "Can-Do" group in Southend. The group will run during term time only and will meet once a fortnight on a Monday.



Parents with a learning difficulty will have the chance to come and have a drink and a chat. Children under five are welcome.

If you or a friend are interested then contact Anita on 01375 389869.

Volunteering at Walton Farm by Mark

I am volunteering at Walton Farm. I help to collect the scrap iron. Sometimes we take children who visit the farm for a ride on the tractors.

Frank who owns the farm, bakes bread and if you visit you can bake bread to.

Sports Advocacy

Are you interested in sport? Maybe you fancy a game of football, going for a walk or playing carpet bowls?



Why not find out what is available from Don our Sports advocate!

Contact Don on 01277 214210



Drama group in Grays

Loss and Bereavement group

Phone the Grays office for details



The Beehive
Resource Centre
West Street
Grays
RM17 6XP



01375 389869



www.batias.com

For more information about Reaching Communities contact Christine, David or Anita at the Grays office.